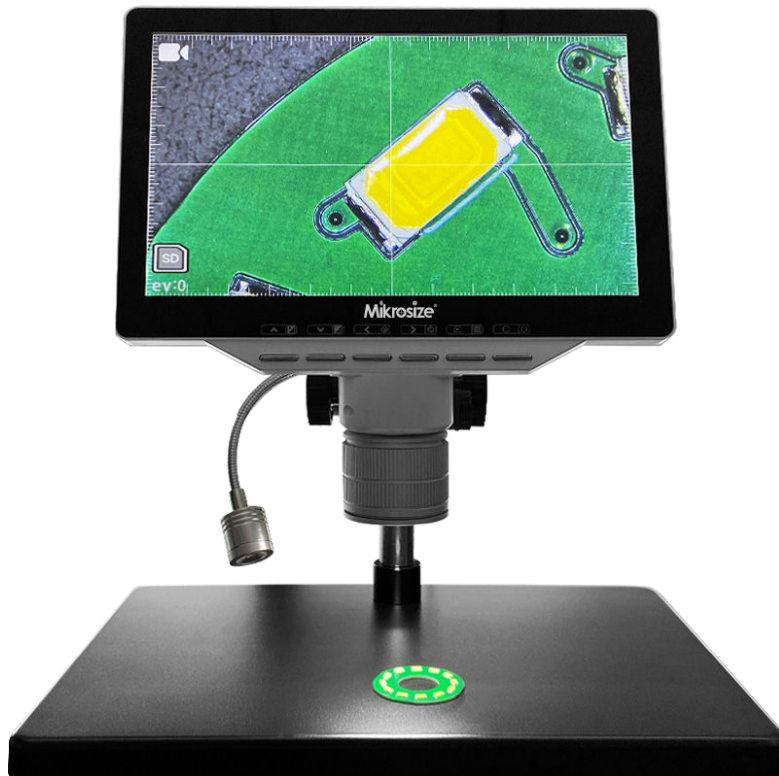




iVideo-106 Digital Video Microscope

Instruction Manual



Anhui Mikrosize Precision Instrument Co.,Ltd

Add: A-4035 RuiFeng Business Expo, Wuhu City, China, 241000.

Web: www.mikrosize.com **Email:** mikrosize@mikrosize.com

Contents

1. Introduction	1
2. Parameters	2
3. Operating Instructions	3
4. Outfit	4
5. Safety Precautions	4
6. Difficulty Resolution	5
7. Disclaimer.....	6

1.Introduction

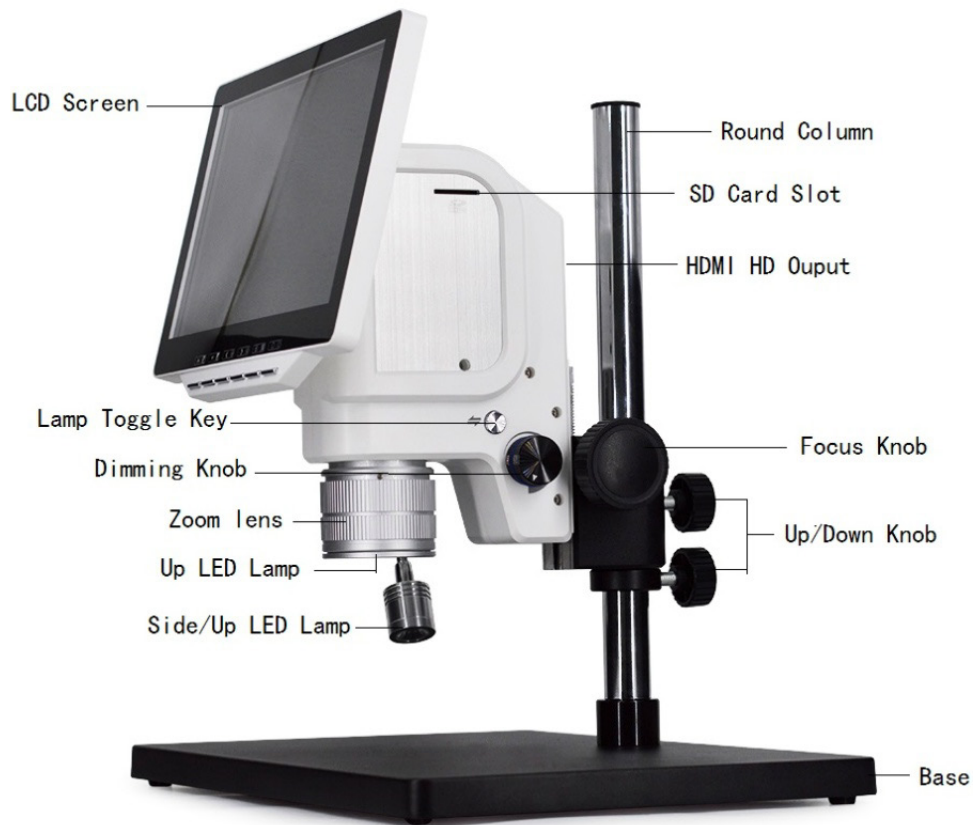
WD-I106LX-A is widely used in PCB boards, hardware, serial devices, FPC, textiles, tickets, kinds of visual industrial testing, digital magnifying glass, hospital research, education, criminal investigation and other fields. It will reduce labor intensity and improve work efficiency.

2.Parameters

LCD Screen	Size	10.6 Inches IPS
	Resolution	1366*768
Digital Parameters	Camera Pixel	1200w
	WDR	YES
	Video Resolution	1080p/60fps
	Data Output	HDMI
	Function	Automatic exposure, exposure offset, automatic white balance, multiple measurement methods, video recording, local storage (maximum memory 32G)
	Storage	SD Card
	Measurement & Position	YES
	External Interface	Projector/Monitor
Optical Paramete	Objective Lense	Zoom lens
	Rate	0.7X~4.5X
Platform Parameters	Illumination	Side LED lights,LED Lamp, Brightness Adjustable
	Focus Range	42mm
	Operating Distance	105mm
	Column	Round column
	Bracket Size	380mm*260mm*20mm
Supply Voltage		DC12V

3. Operating Instructions

3.1 The body of digital microscope



① Focus Knob:

Turning the Focus Knob slowly, that can adjust the picture sharpness.

② Up/Down Knob:

When preparing to observe the object, the microscope body should be lifted to the appropriate position, when the position is determined, please tighten the knob to fix the microscope body.

③ Power switch button:

This button is to switch the light source (light source, side light source) channel button, in the observation of objects, select the appropriate light source according to the needs of light.

3. Operating Instructions

④ Dimming Knob:

This knob adjusts the light brightness. When observing the object, adjust the light brightness according to the demand of light to achieve the best observation.

⑤ Zoom Lens:

This knob adjusts the magnification of the device. According to the observation needs, adjust the magnification, to achieve the best observation.

⑥ LED Lamp:

LED Lamp ,with a spiral removable installation, more convenient for replace.

3.2 Buttons Description of LCD Screen



① In the mode of BROWSE: Scale color + ; In the mode of MENU and PLAYBACK:Up ;

② In the mode of BROWSE: Scale color - ; In the mode of MENU and PLAYBACK:Down ;

③ In the mode of BROWSE: Scale mode + ; In the mode of MENU and PLAYBACK:Left ;

④ In the mode of BROWSE: Scale mode - ; In the mode of MENU and PLAYBACK:Right ;

⑤ In the mode of BROWSE: Short press to switch modes(BROWSE\ MENU\ PLAYBACK);

⑥ In the mode of BROWSE: photo, video ; In the mode of MENU and PLAYBACK: OK/ Long press to OFF .

4.Outfit

Item	Quantity
Main Body	1
Round Column	1
Base	1
Up/Down Knob	1
LED Lamp	1
Allen Key	1
HDMI Cable	1
12V Power Supply	1

5.Safety Precautions

5.1 Do not place heavy objects on the base to prevent the base deformation.

5.2 Do not attempt to disassemble this product yourself. Opening the covers may expose you to dangerous voltage points or other risks.

5.3 If the LCD Screen is dirty, please use a kens brush on soft cloth to wipe clean.

Avoid touching them with your fingers.

5.4 Using or storing microscope , do not plug in any other cables.

5.5 When hands are wet, do not plug in or remove the adaptor or other connectors.

5.6 Do not clean the products with ethyl alcohol or other organic.

5.7 If liquid has entered stage, immediately turn the power off and use dryer neither.
Please send to the maintenance center.

5.8 To avoid electric shock. When remove microscope,please pull out the power source.

5.9 Temperature: 0°C ~ 45°C and Humidity: 35%~75%.

6. Difficulty Resolution

Trouble vision	Reason	Solution
blank screen	LED is closed	Open LED
	No power supply	Check the power cord connection
Image vague	Dirty lens	Clean by Lens paper
	Incorrect focusing	Adjust focusing
Flicker screen	Power input is unstable	Change the power
The brightness of screen is not enough	Power does not match	Change the power
	The brightness of LED is not enough	Adjust the brightness
	The problem of exposure offset	Increase exposure offset
Buttons no respond	Equipment temporary crashes	Restart the Equipment
Buttons instability	Up/Down Knob loose	Adjust the Up/Down Knob
Reflective image	The problem of light source	Switch the light source, adjust the angle of the light source until the best
In the observation process, microscope down on their own, Image vague	Focus Knob loose	Adjust the Focus Knob

7.Disclaimer

The manufacturer and distributor of this product shall not take the responsibilities on the damages caused by the improper using of this product or other artificially damages.

The content of this User manual is based on the current specification of this product. The manufacturer shall not take the responsibility of any inconsistent of the specification to the product for the purpose of improvements and other reasons. Meanwhile, the manufacturer do not have the obligation for updating the content and any information of this manual momentarily.