

HVP-3015

Horizontal Video Projector



Contact us

Mikrosize Precision Instrument Co.,Ltd

A-4035 RuiFeng Business Expo, Wuhu City, China , 241000.

Web: www.mikrosize.com

Email: mikrosize@mikrosize.com



Features and Applications

Product Features

- Solid framework, large lcd touch screen and advanced software.
- High quality optics for crisp and clear images.
- Excellent repeatability.
- Adjustable led illumination.
- High resolution industrial ccd camera.
- Lens changeable within the range of 20-120x magnification.
- Easy to operate user interface.
- Accuracy 0.005mm.
- Advanced functionality such as quick measuring of correlative.
- Parameters of gear tapers.
- Extended function of printing, saving and exporting data.
- Excel or txt report output, dxf input or output.

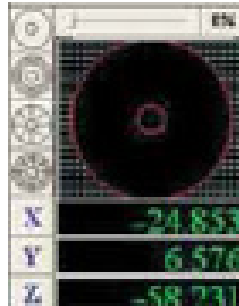
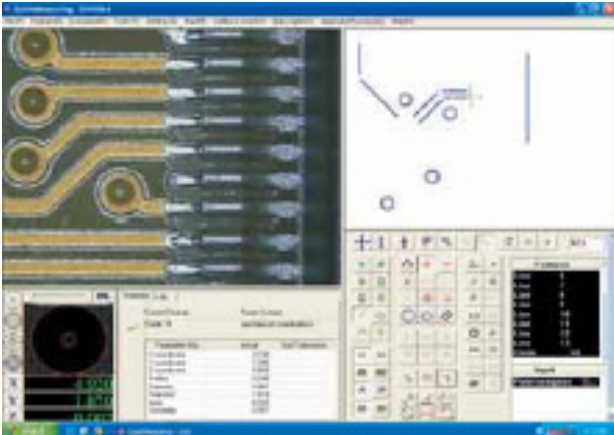


Product Application

- Video measuring machines, measuring microscopes and other vision measuring systems, etc.



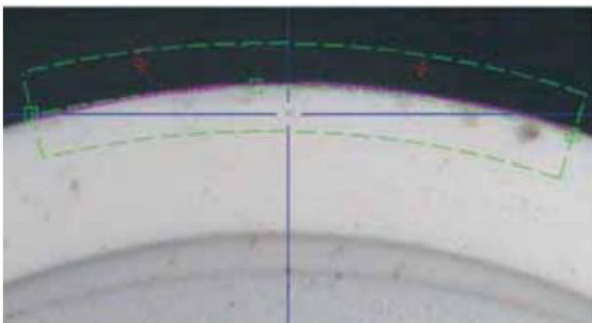
Operation Interface



| Parameter No. | Actual | Set/Reference |
|---------------|--------|---------------|
| 1 coordinate | 24.853 | |
| 2 coordinate | 6.576 | |
| 3 coordinate | 0.000 | |
| Length | 1.480 | |
| Position | 0.000 | |
| Thickness | 0.000 | |

- Modern compact interface design

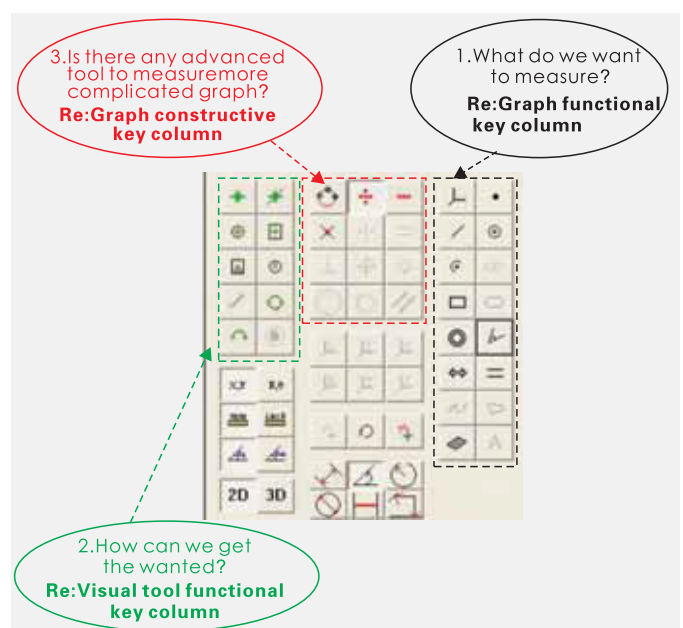
Automatic Edge-Detecting Function



- High-speed, accurate and repeatable. While measurements, it can analyse and dispose the workpiece's characters and identify workpiece edge automatically.

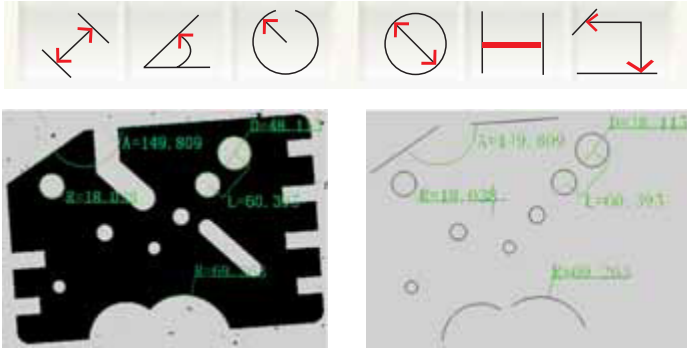
Friendly Compact Functional Key

- Graph functional key, graph constructive functional key and visual tool functional key is separated by color and grouped tactily, it makes the communication between operator and instrument quickly and friendly, and it improves the speed of measurement efficiency obviously.



Operation Interface

Dimension Label Function

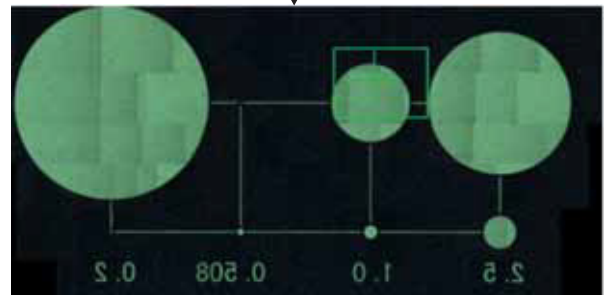


- Quick measuring is able to label dimension With detail data On actual image freely, which reduces the measuring time and improves efficiency obviously. Now, the label is displayed with distance, angle, radius and diameter according, etc.

Map Photo & Measurement, And Map Navigation

- Quickmeasuring can take photos for the work-piece on work-stage, then automatically combines segments into a full map-photo, which can be saved and measured, the operator also can use this map-photo to make navigation. While clicking any position of picture, software will quickly move forward the Appointed zone, which largely improves the efficiency of measurement. Besides, the map-photo also can be input again and labeled directly.
Suggestion: It is better to use this function on NC or CNC machines.

This map provides navigation function, that is, pressing mouse right key on the map, then move it to here, software will move to target zone rapidly.



Modern Simple Interface Design



3D touch probe function column

- By the touch probe, Quickmeasuring can make 3D measurement, including sphere, cylinder, taper, height, distance of two plane, planeness and parallelism, etc.

Operation Interface

Program Simply And Directly

- Unlike the traditional measurement programming, Quickmeasuring adopt training style programming, it can record measurement program which can be carried out at any time (measuring order, illumination setup etc). It is more convenient and quick to measure the same workpiece repeatedly. and quick to measure the same workpiece repeatedly.

Multi-format Output

- Measured results of Quickmeasuring can be output in multi-formats, such as TXT, Excel. Quickmeasuring also can input and output the Dxf file, which let the operator make CAD graphic processing easily.

Multi-Magnification Zoom High-Resolution Ccd Camera

- High-quality 0.7-4.5x zoom lens select and magnify complicated parts within the visual widefield early and sharply. High resolution CCD camera, capture card and monitor ensure the output image without any aberration.



Super clear image



Min. _____ Magnification of Zoom lens (Low-High) _____ Max. →

Image Sharpening And Auto-Fringe Function

- QuickMeasuring can contrast the image before and after sharpening, and the sharpening makes measurement more convenient when checking some complicated and uneasy workpieces.
- Auto-fringe function makes the whiteness and blackness of sharpened image clearer and edge-detect result accurate.



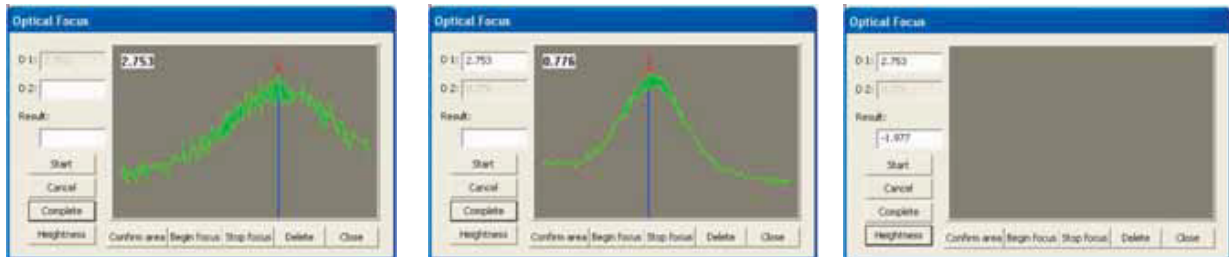
Before sharpening



After sharpening

Operation Interface

The Step Of Optical Video Height Measurement



Spc Statistical Function Column



4-Division And 40-Division Ring Illumination Make Measurement Clearer And Accurater

- USB 5-ring,8-direction and 40-division LED illumination provide multi-choice of illumination brightness,which makes the measurement of edge-detect and deeper hole easily.Besides,the illumination condition also can be saved simultaneously while programming in order to realize the auto-control of illumination.4-division LED illumination is Low-version lightsource for the manual Video measuring machine.

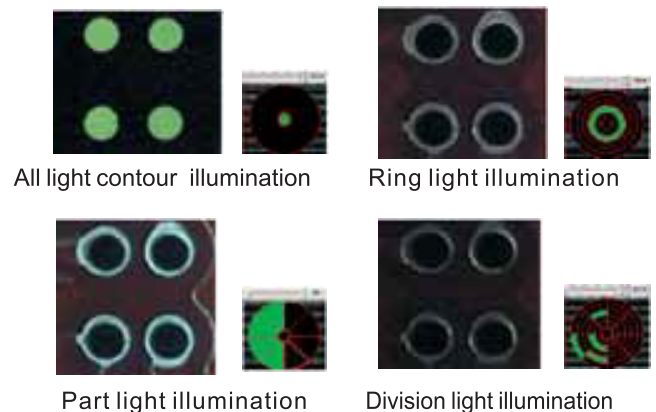


Image Auto-Focus And Video Height Measurement



Full auto focusing

Through two focusing for different layers of work piece, to obtain height value.



Superstratum



Bottom

- QuickMeasuring realizes entire auto-focus,which reduces the visual error caused by eye-focus and improves the measuring efficiency and accuracy.
- Meanwhile,QuickMeasuring use auto-focus to achieve accurate height measurement of two plane on manual machine quickly.

Technical Specification

| Technical Specification | HVP-3015 | HVP-3020 |
|----------------------------|--|-------------|
| (X-Y/Z)Measuring Range(mm) | 300x150x150 | 300x125x200 |
| Machine Dimension(mm) | 650x800x1600 | |
| Operation Mode | Manual | |
| Magnification | 20-120X | |
| Screen Dimension | 19"monitor(HV)or 19"touch-type LED monitor (HTV) | |
| Lens Work Range | 95mm | |
| X,Y-Axis Resolution | 1um | |
| Accuracy | $\leq(3+L/200)\text{um}$ | |
| Repeatability | 5um | |
| Measuring Software | Quick Measuring 2.0 | |
| Color Ccd Camera | 430,000pixel | |
| Suitable Environment | Workshop and Metrology room | |
| Stage Load Capacity | 15Kg | |

Standard Delivery

| Name | Qty | Photo |
|---|-------|---|
| Measuring Software | 1 set |  |
| Color CCD Camera (MC1 (430,000 Pixels)) | 1 pc |  |
| Zoom Lens General Zoom Lens (0.7~4.5x) | 1 pc |  |
| Vision Capture Card 7130 (VC1) | 1 pc |  |
| Basic Adjustable LED Light Source | 1 pc |  |

Optional Delivery

| Accessory Category | Model/Specification |
|----------------------|---|
| Camera Upgrade | MC2 (480TVL, 0.1Lux/F1.2) |
| | MC3 (480TVL, S/N Ratio 57dB) |
| Zoom Lens Upgrade | Navitar Click Zoom Lens (0.7~4.5x) |
| | Coaxial Zoom Lens (0.7~4.5x) |
| | Motorized Zoom Lens (0.7~4.5x) |
| Lens Accessories | 0.5x Adjustable Objective |
| | 2x Adjustable Objective |
| | 0.5x CCD Adapter |
| | 2x CCD Adapter |
| Light Source Upgrade | Ultrazoom Objective (5x/10x/20x/50x) |
| | 4-Division LED Light Source |
| | 40-Division LED Light Source |
| Mechanical Accessory | Point Fiber Light Source |
| | Working Cupboard ST04 |
| Precision Accessory | Renishaw MCP Touch Probe (K1/K2, 1-2mm) |