

Mikrosize[®]

iStereo-205

Stereo Microscope



Contact us

Mikrosize Precision Instrument Co.,Ltd

A-4035 RuiFeng Business Expo, Wuhu City, China , 241000.

Web: www.mikrosize.com

Email: mikrosize@mikrosize.com



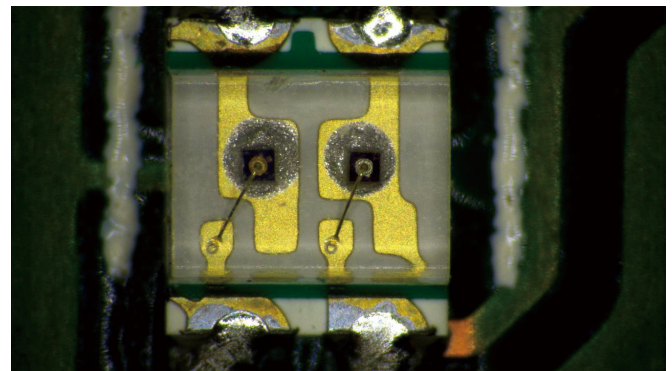
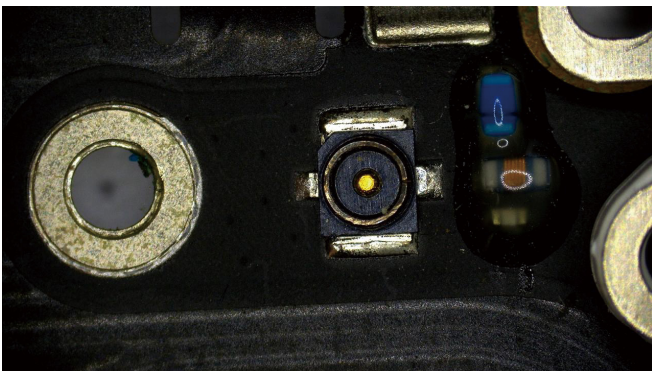
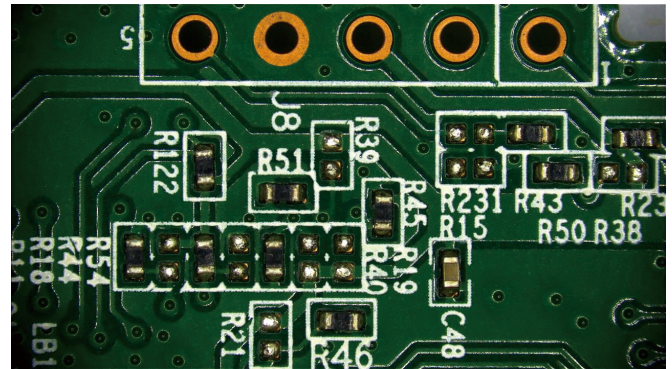
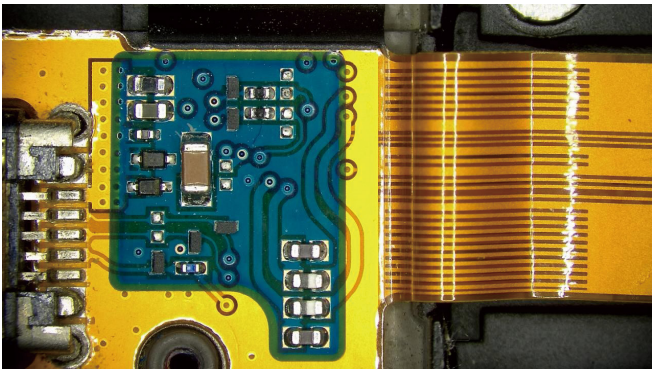
Web: www.mikrosize.uk

Email: mikrosize@mikrosize.com

Feature and Application

Product Feature

- Offers high-quality optical systems and durable, reliable operating mechanisms.
- Complete accessories and diverse combination configurations.



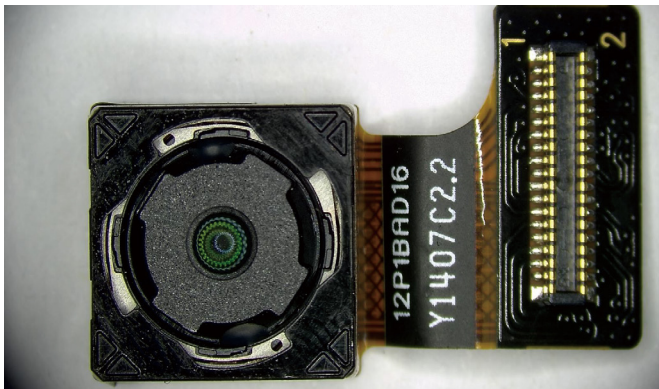
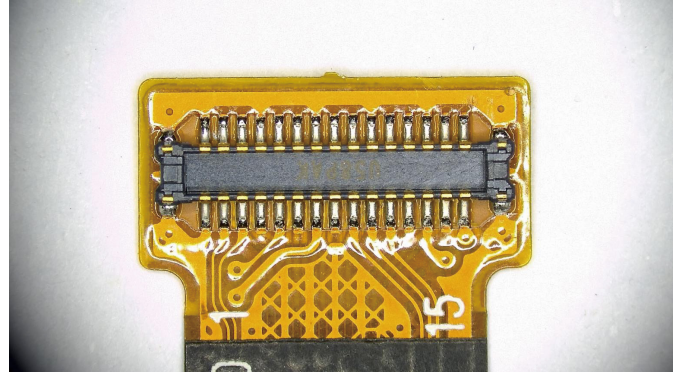
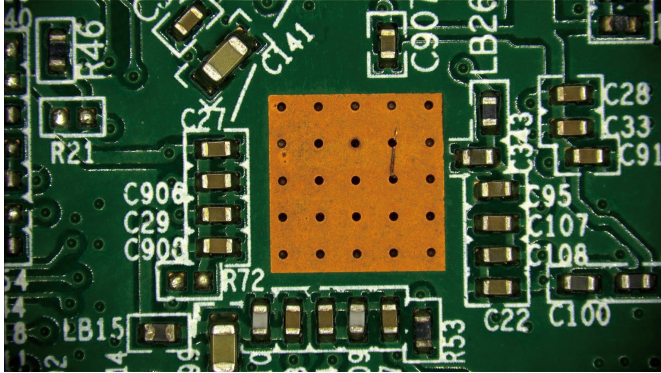
Product Application

- Satisfies high-precision requirements in modern biology, medicine, scientific research, online inspection in modern electronics industry, and other scientific and industrial fields.

Technical Specification

Optical System	Mikrisize Optical System
Observation Tube	Hinged binocular observation tube, 45° inclined, interpupillary distance 54-76mm
	Hinged trinocular observation tube, connectable to imaging system, 45° inclined, interpupillary distance 54-76mm
Eyepiece	Extra-wide field eyepiece WF10X (field number Φ 20mm), high eye-point, diopter adjustable
	Extra-wide field eyepiece WF20X (field number Φ 12mm)
Zoom Objective	0.7X-4.5X
Zoom Ratio	1:6.4
Working Distance	100mm
Auxiliary Objective	0.5X Plan Objective, WD165mm
	2X Plan Objective, WD30mm
Stage	Column-type small flat base: size 260*200mm, with B/W plate and slide holder Non-standard table size, stand height, universal bracket, moving platform
Light Source	Reflected light illumination 100V-240V/LED
CCD Interface	Standard C-mount 0.5X
	Standard C-mount 1X
Imaging System	HDMI interface, connected to monitor
	USB interface, connected to computer
Software Functions	Photographing, processing, measurement, reporting

Actual Shot Photos



Mikrosize Precision Instrument Co.,Ltd

Add: A-4035 RuiFeng Business Expo , Wuhu City, China , 241000.

Tel: 0553-2836939 Fax:0553-2836938 Web: www.mikrosize.com

Mikrosize®
SINCE 2009
Professional Brand
Manufacturer

MEASURING & TESTING