

UTM-SC

Single Column Electronic Universal Testing Machine



Contact us

Mikrosize Precision Instrument Co.,Ltd

A-4035 RuiFeng Business Expo, Wuhu City, China , 241000.

Web: www.mikrosize.com

Email: mikrosize@mikrosize.com



Features and Applications

Product Features

- Wide range of application, powerful, compact structure, easy to operate;
- High measurement accuracy;
- Adoption of high speed, low vibration and low noise motor drive;
- Multilingual switching;
- Flexible report viewing and printing capabilities;
- Auto-returning;
- Multiple curve modes (optional): e.g. Stress - Strain, Force - Displacement, Force - Time, Strength - Time, etc.
- Multiple test mode function: with tensile, flexural, compressive, folding, tearing, peeling, elongation and other test modes.
- Multiple protection devices.

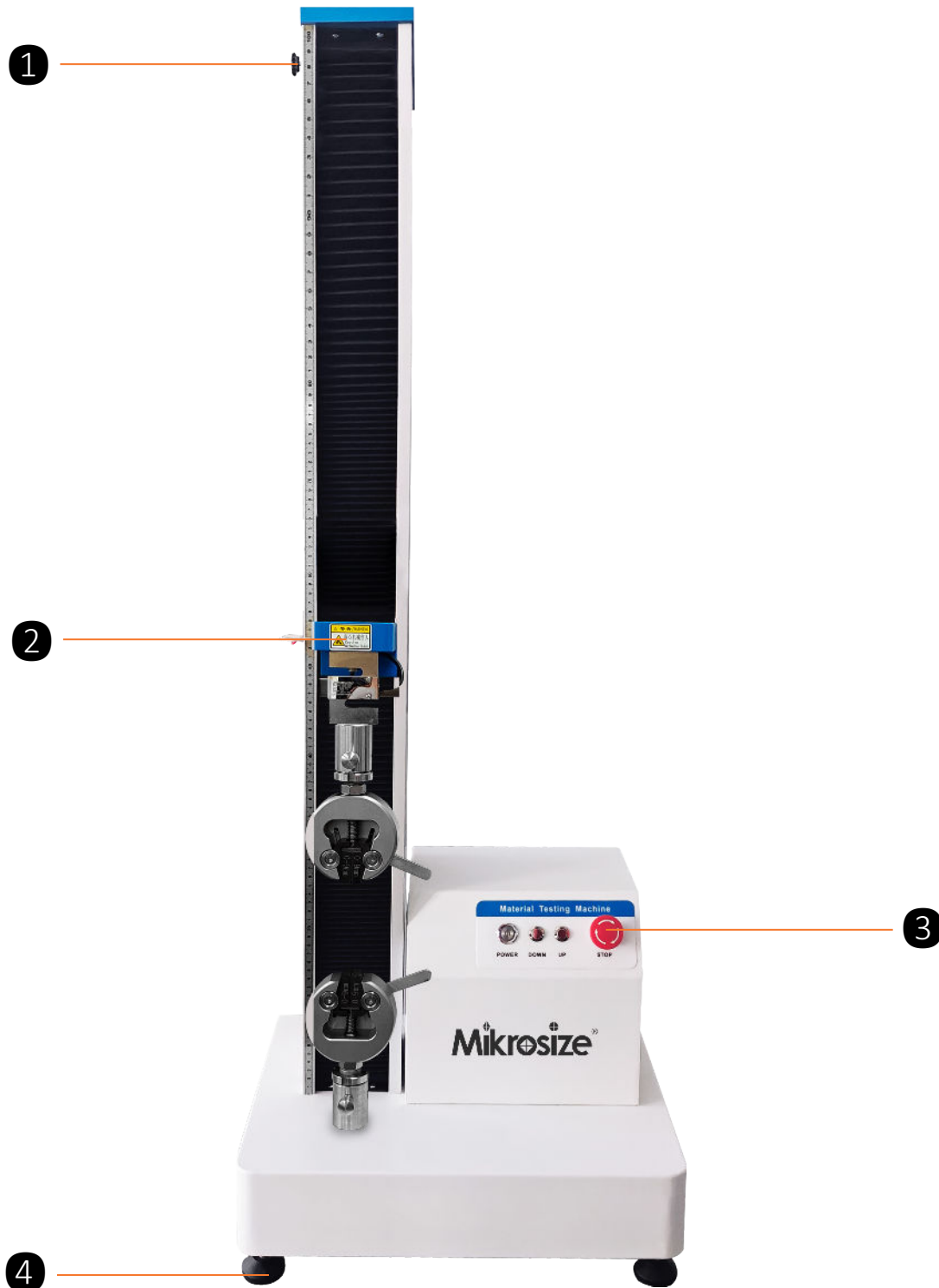


Product Application

- Manufacturing: Mechanical performance testing of various types of components and raw materials produced to ensure product quality in line with design requirements.
- Materials R&D: Help researchers understand the mechanical properties of new materials and provide data support for material improvement and innovation.
- Scientific research institutions: In scientific research experiments, it is used to study the laws of mechanical behavior of substances and promote the development of related disciplines.



Instrument Appearance



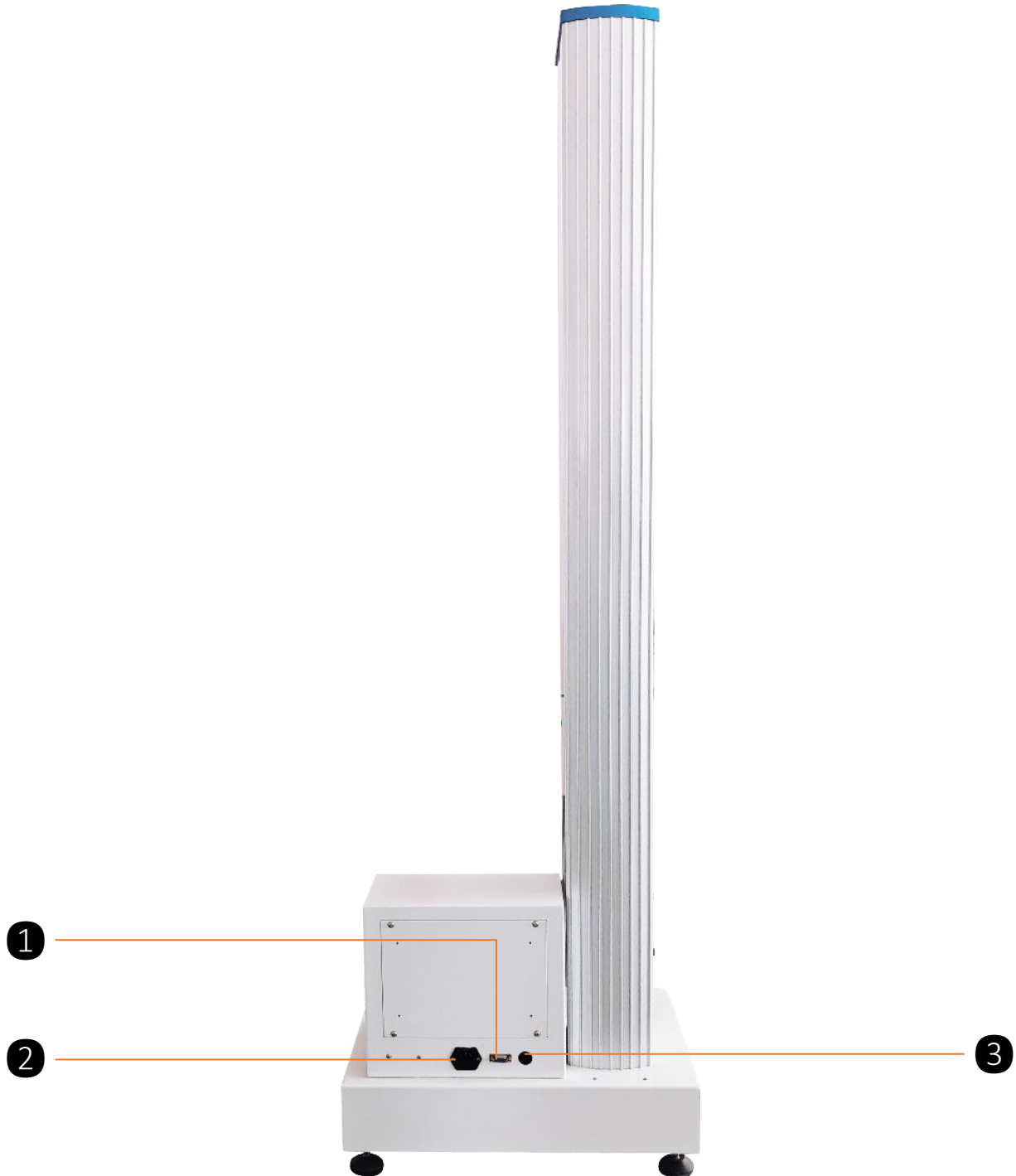
1.Limit Device

2.Load Cell

3.Emergency Stop Button

4.Leveling Feet

Instrument Appearance



1.Power Cord Socket

2.Socket For Computer Connection

3.Socket For The Extension Meter (Optional)

Product Details

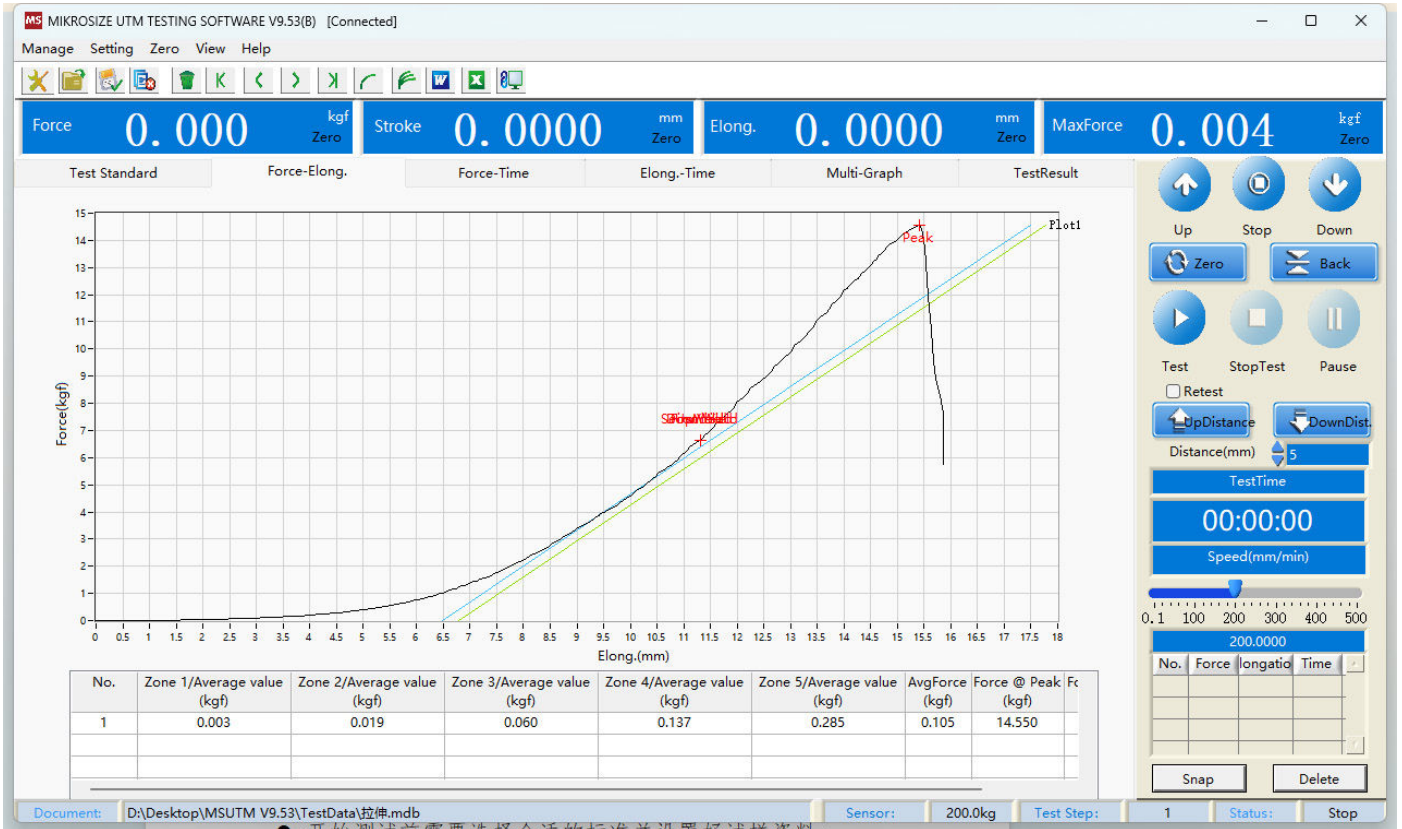
Detailed Display



- This equipment adopts high-precision force value sensor to ensure the accuracy of experimental data;
- The fixture can be quickly loaded and unloaded, loosen the fixture lock nut, pull out the fixture pin, you can remove the fixture, installation is installed in the reverse order;
- This equipment can be adapted to a variety of fixtures to meet the requirements of different experiments.

Operation Interface

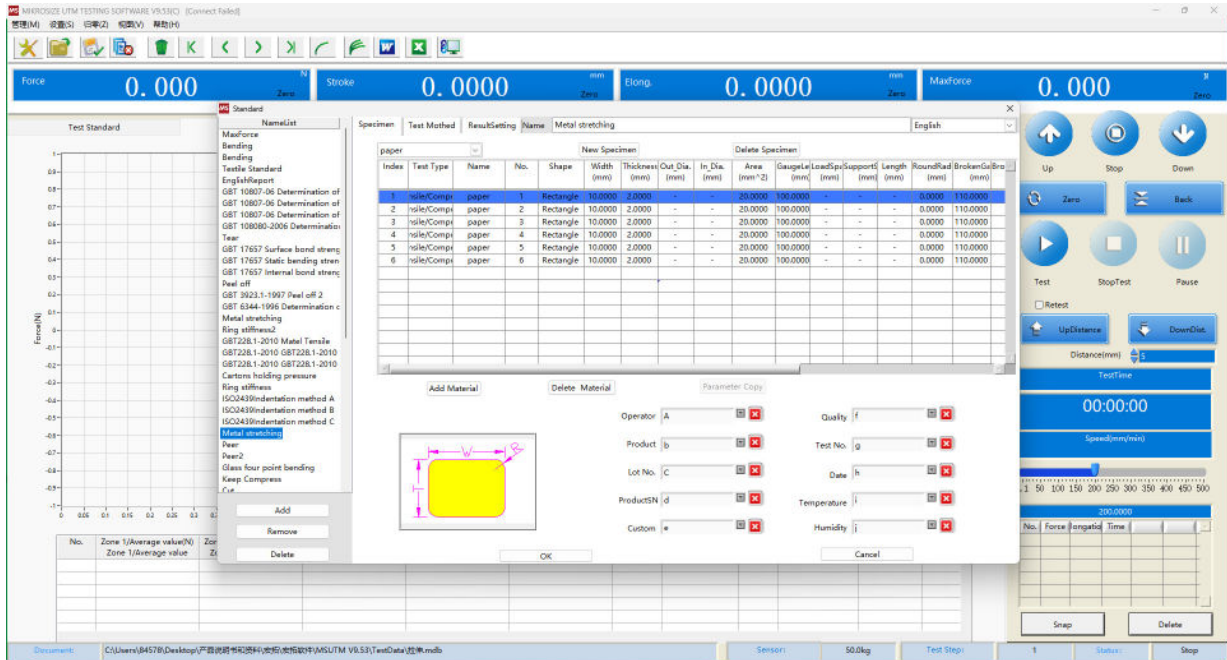
Software Interface



- In addition to the control buttons on the host, the main control mode of this device is software control.
- Through the right side of the screen buttons can control the host lifting and lowering as well as running and stopping, pointing speed, etc.; the upper display force, displacement, deformation, maximum force four project parameters, you can click on the name of the project to choose to display the project, such as stress, strain, elongation, speed, etc.

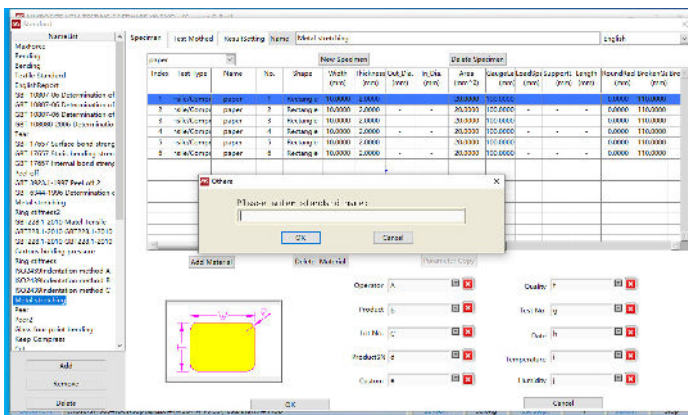
Operation Interface

Test Standard and Specimen Information

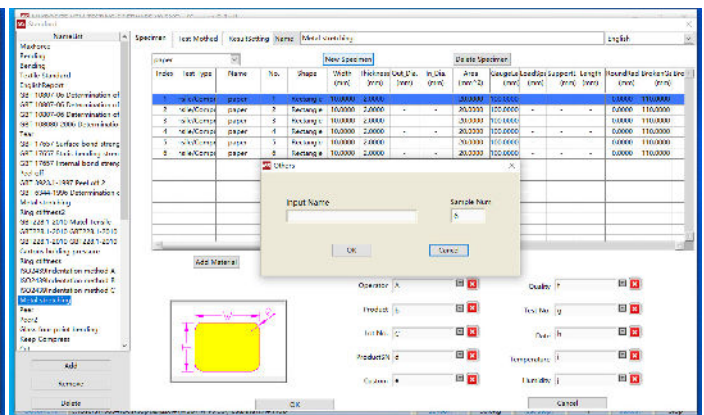


Test Standard

- Before starting the test, you have to select the appropriate test standard and set up the specimen information, which is used to display and set up the test standard and the test specimen information, including its shape and size, as well as related auxiliary information, such as testers, specimen material, customer name and so on.



New Standard

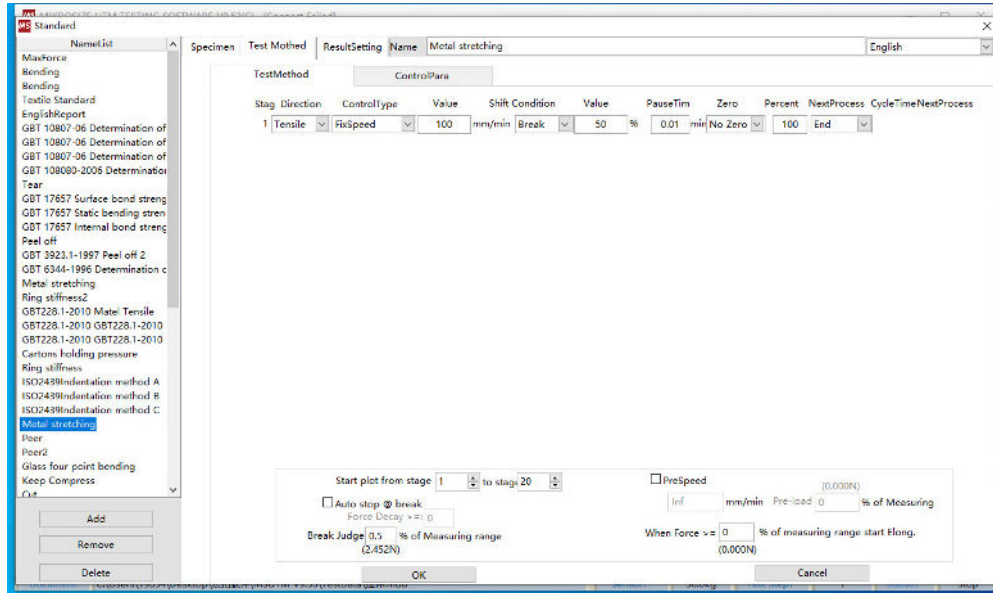


New Specimen

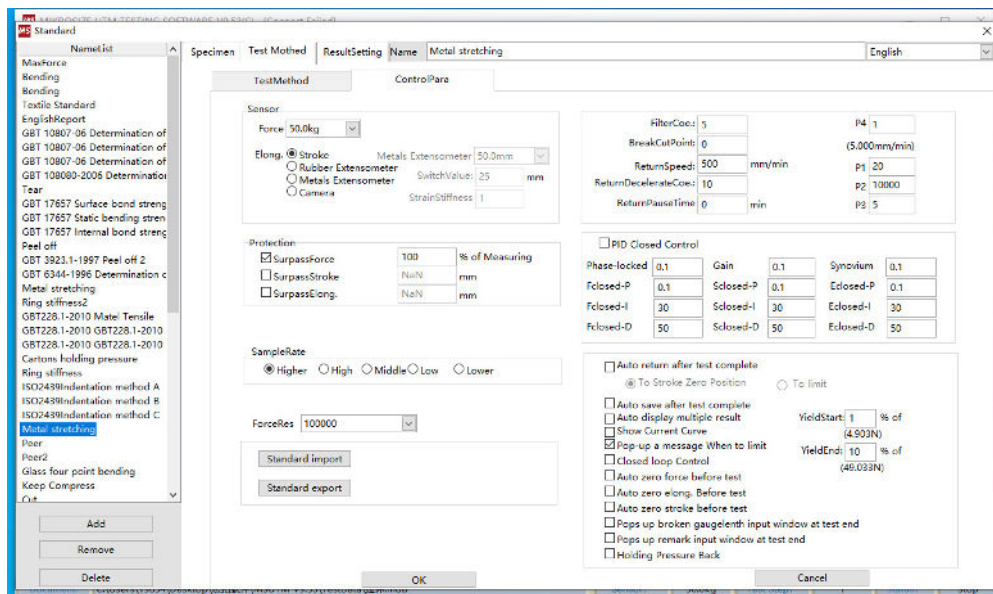
- The user can add new test standards and specimen information, or delete specimen information and test standards.

Operation Interface

Test Programs And Control Parameters



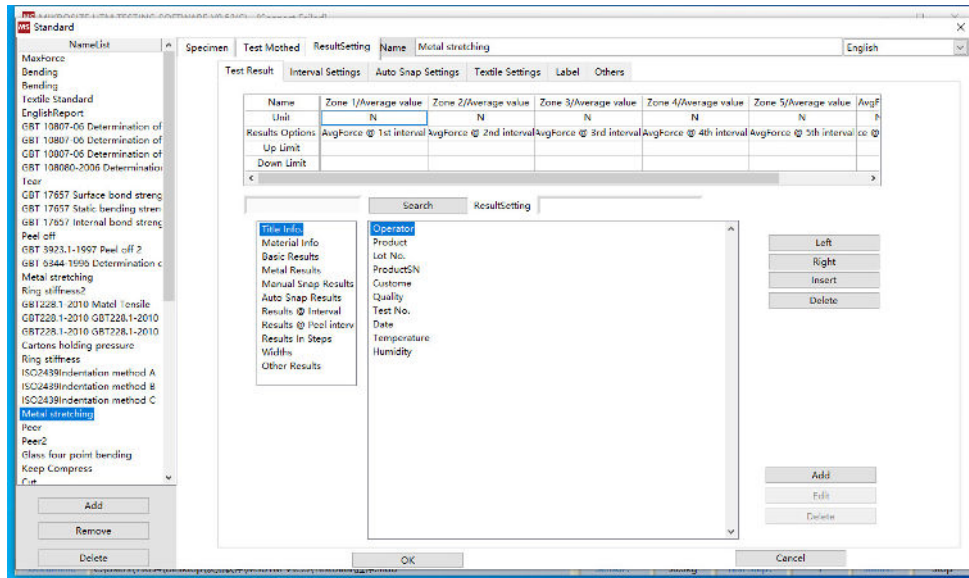
- Users can edit the test method in this interface, such as the test direction: tensile or compressive; mode switching conditions: break point or yield or deformation, force, strain and other parameters to reach the set value.



- It is mainly used to set the system parameters related to sensors and control, and generally does not need to be adjusted by the user.

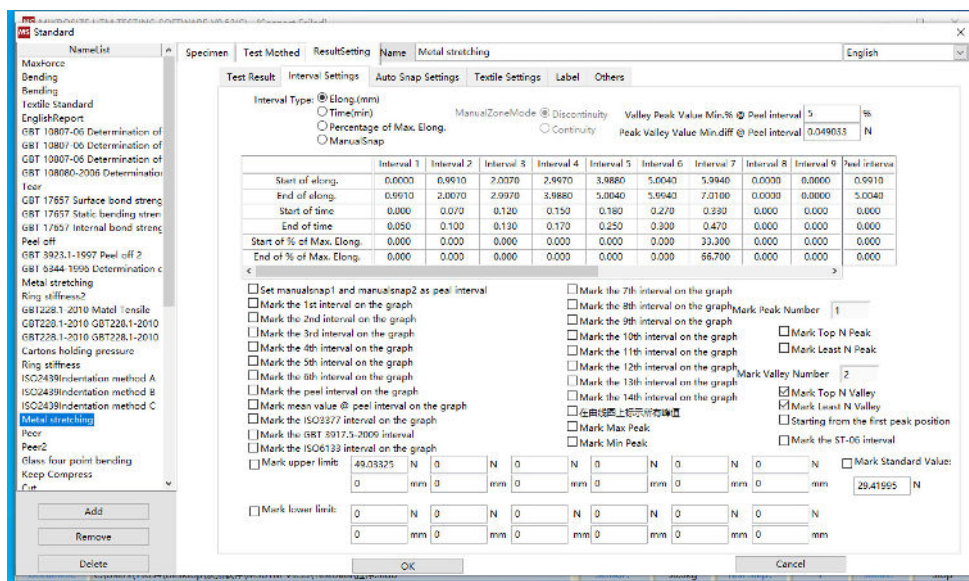
Operation Interface

Test Result



- This screen is mainly used to set which test results are to be output in the report, and by selecting one of the rows, the test results of its category will be displayed in the test result name display box on the right side.
- The software categorizes all test results into 11 categories, making it easy for customers to find the test results they need. Users can also customize the test results.

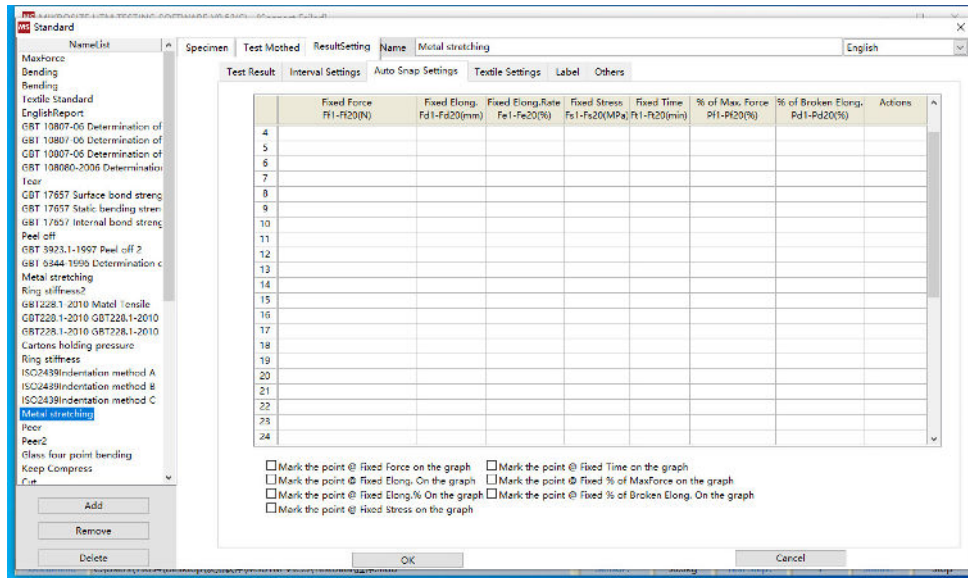
Interval Settings



- This software supports three modes of dividing intervals: deformation, time, and percentage of deformation.

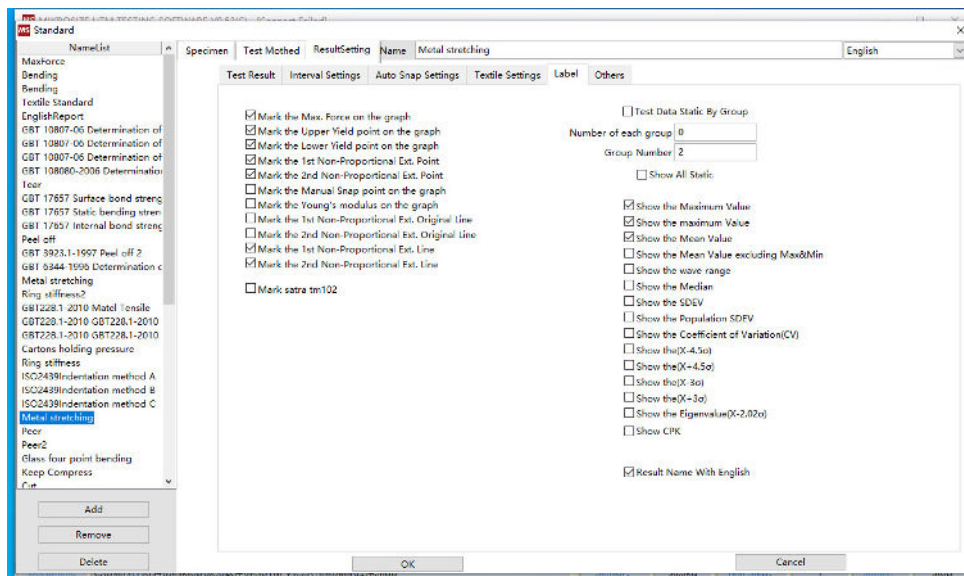
Operation Interface

Automatic Pickup Point Setting



- This software supports 7 modes of point taking: fixed force, fixed deformation, fixed elongation, fixed stress, fixed time, percentage of maximum force, and percentage of deformation at break, which can be set at the same time or individually.
- The software also supports taking points on the curve back and forth.

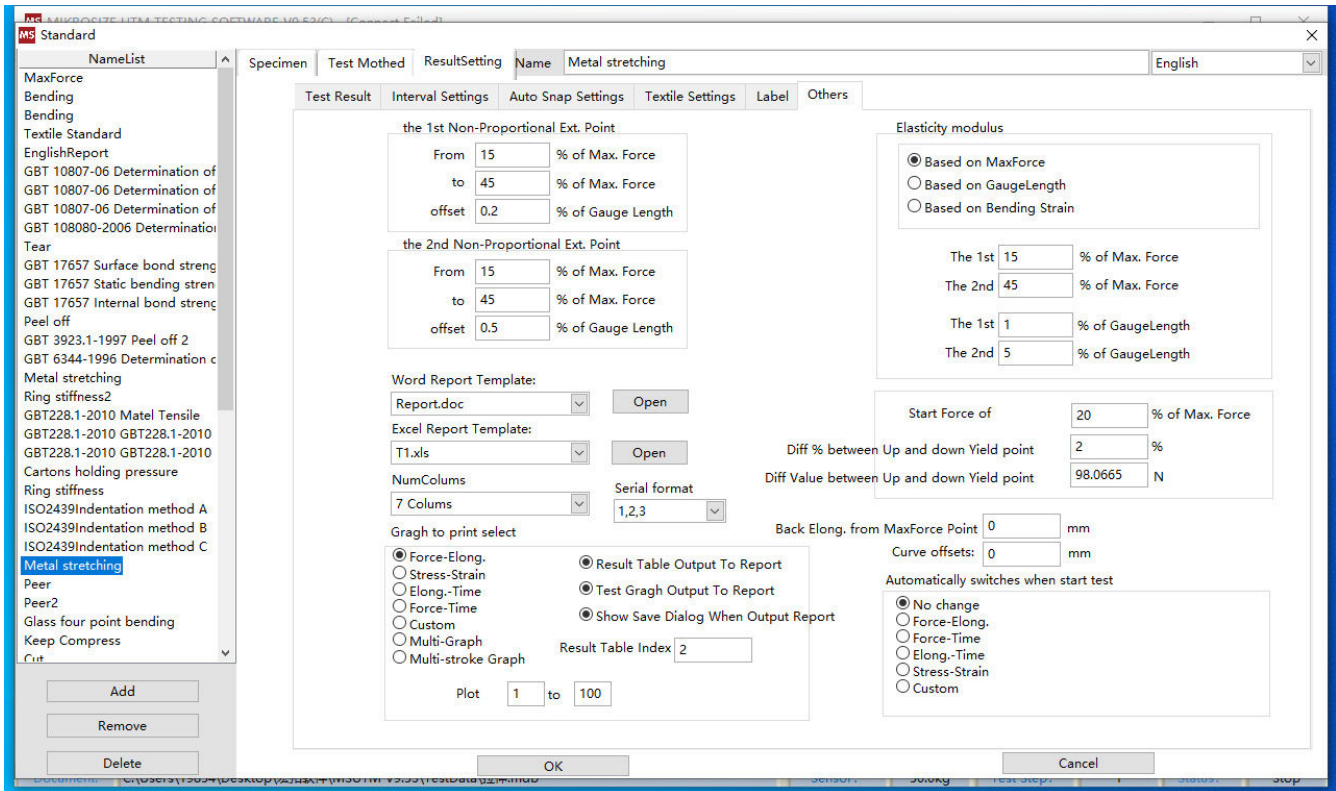
Marking



- The function of this screen is to set whether to mark various characteristic points on the curve, and whether to display the maximum value, average value, and other statistical values in the test results.

Operation Interface

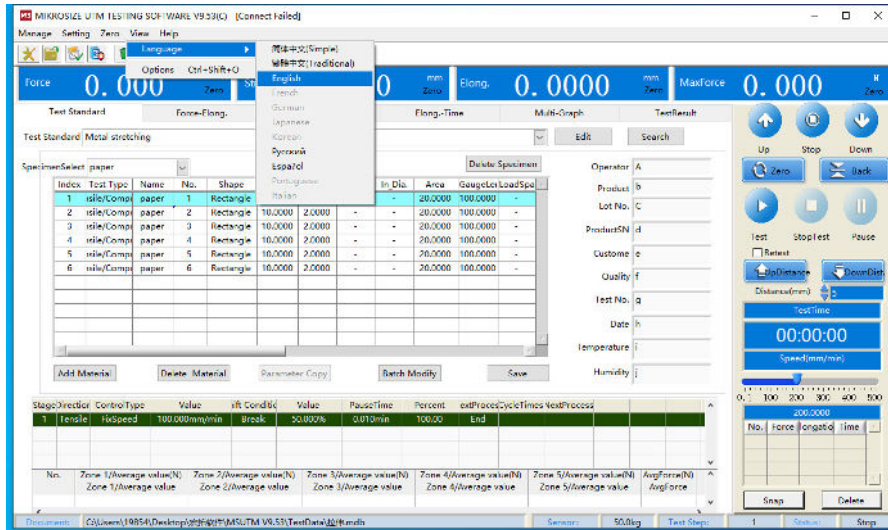
Others



- This interface is mainly used to set the first and second prescribed non-proportional extension point interval and offset, elastic modulus elastic region interval, yield point start point and fall ratio parameters. There are also report related settings, such as report word template, report excel template, report output graphic selection, report whether to output test results table and graphic selection. Whether to automatically switch to the corresponding curve interface when testing.

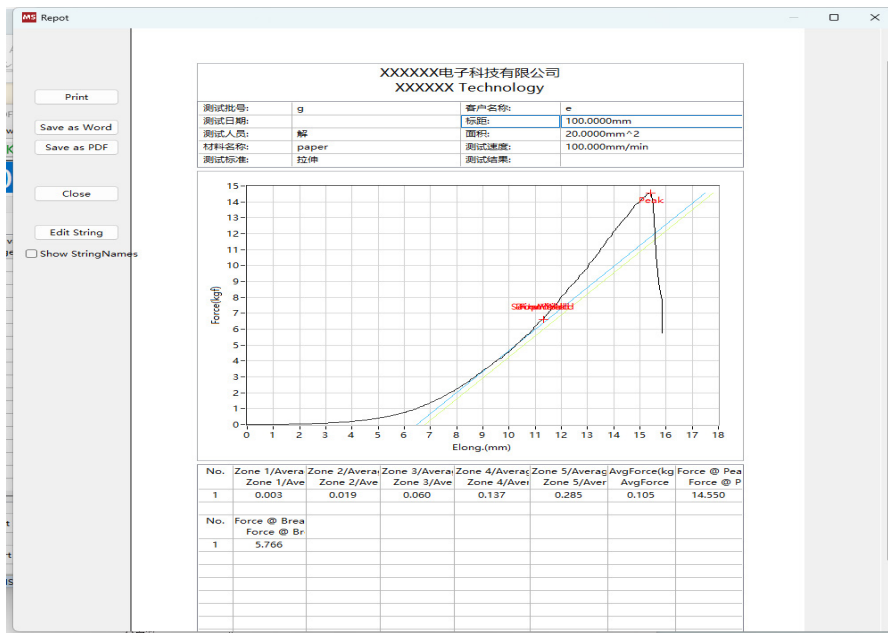
Operation Interface

Language Switching



- Regular edition software comes with Simplified Chinese, Traditional Chinese and English languages. The Premium version of the software comes with a choice of 10 languages.

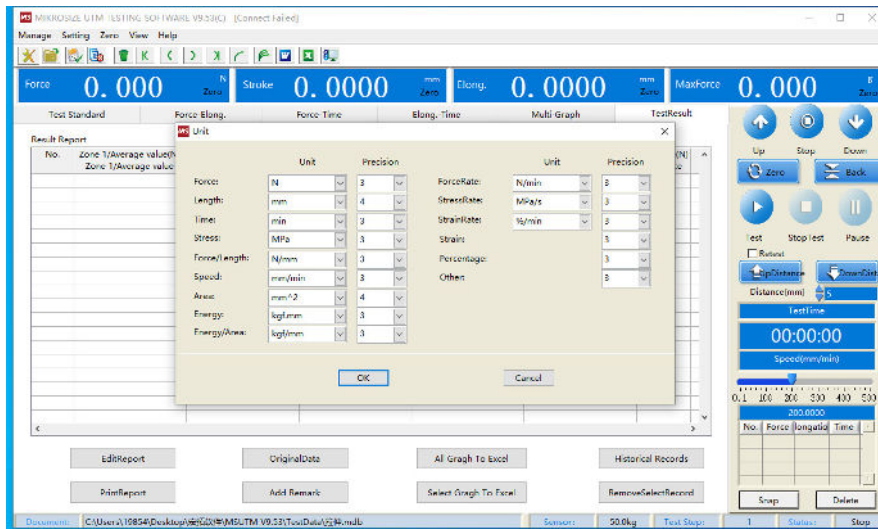
Report Editing



- This interface for the software comes with a simple results report, the user can edit the report, the output format has two kinds of PDF and Word. Users can also choose to output the report in the shortcut above the software, there are two kinds of Word and Excel.

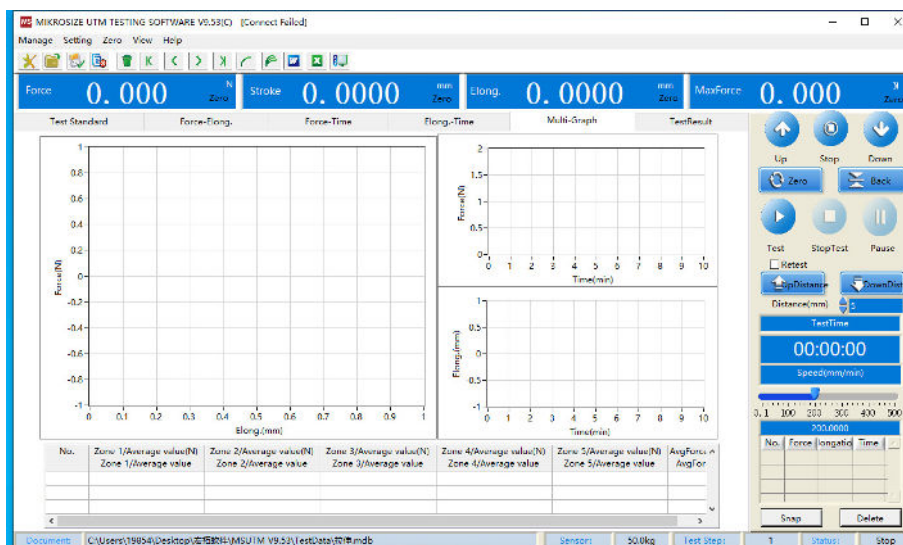
Operation Interface

Units



- There are many different units available for each parameter of this software.
- The user can select a unit from a drop-down list and choose a precision, which indicates the number of decimal places. The unit system determines the unit of the whole system, and all the realities and operations of the quantities are executed with this unit system.

Multi - Graph Mode









- This software supports multi-plot mode, users can simultaneously view the curve of the same 1 test of 3 different axes, to avoid switching back and forth, and convenient and intuitive.



Technical Specification

Model		UTM-SC						
Name		Single Column Electronic Universal Testing Machine						
Subdivision Model		UTM-SC-5	UTM-S C-10	UTM-S C-20	UTM-S C-50	UTM-SC-100	UTM-SC-200	UTM-SC-500
Capacity	KN	0.05	0.1	0.2	0.5	1	2	5
	KG	5	10	20	50	100	200	500
	lb	11	22	44	110	220	440	1102
Testing Class		Class 1 (can be change to Class 0.5)						
Force Accuracy		Within $\pm 1\%$ of the indicated value (can be change to 0.5%)						
Speed Accuracy		Within $\pm 1\%$ of the indicated value (can be change to 0.5%)						
Speed Range		0.01-500mm/min						
Displacement Accuracy		Within $\pm 1\%$ of the indicated value (can be change to 0.5%)						
Large Deformation Measuring Range		1000mm(optional)						
Large Deformation Resolution		Within $\pm 1\%$ of the indicated value (can be change to 0.5%)						
Measuring Height		Standard Model: 500mm Heightened Model: 1000mm						
Power Supply		220V.AC/50Hz; (Can be selected by country :110V.AC/60Hz)						
Weight		Net Weight: 65Kg						
Dimension		Standard: L*W*H:450mm*400mm*1190mm Heightened: L*W*H:450mm*400mm*1580mm						

Standard Delivery

Name	Qty	Photo
Mainframe Machine	1 pc	
Fixture	1 set	
Power Cord	1 set	/
Software	1 set	
Horizontal Adjustable Feet	4 set	/
Instruction Manual	1 set	
Product Certificate	1 set	
Product Warranty	1 set	

Optional Delivery

Name	Photo
Small Deformed Extensometers	 A pair of small, silver-colored extensometers with a blue sensor head and metal clamps.
Large Deformation Extensometer	 A tall, vertical, silver-colored extensometer with a black sensor head and a base.
Printer	 A white HP printer with a printed page emerging from the tray.
Computer	 A desktop computer system including a monitor displaying a colorful abstract image and a black tower PC case.
Other Fixture	/